

**Time switches  
for incorporation  
72 x 72 mm**



## Features

- Programming by unlosable segments. A red zone is unmasked by the segment when put into the ON state; in the OFF state this red zone is masked.
- Indication of time by clock hands allowing time setting in both directions by simple rotation. Summer/winter time corrections are easily carried out
- Manual instant override control with automatic return to normal sequence of program, display of contact.
- Fitting
  - flush fitting on facade, fixation clamp from front type BR6 or clipped clamp from the rear type BR7, connection by flat connectors of 6.35 mm
  - on surface mounted base,
  - on printed circuit

## Functional characteristics

### Daily version:

- Programming in steps of 10 min
- Minimum interval between 2 switchings: 20 minutes
- 72 switchings per day
- Accuracy of switching: 1 min. 30 sec.

### Weekly version:

- Programming in steps of 1 hour
- Minimum interval between 2 switchings: 2 hours
- 84 switchings per week
- Accuracy of switching: 10 min.

## Technical characteristics

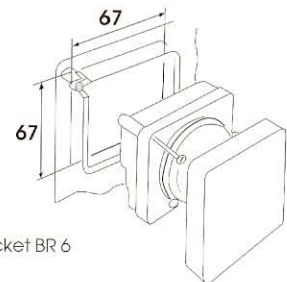
Supply voltage	230 V +10% -15%	
Frequency	50/60 Hz	
Power consumption	approx. 0.5 VA	
Changeover contact voltage free	Resistive load	16 A 250 V
	inductive load (cos φ = 0.6)	3 A 250 V
	incandescent lamps	1000 W 250 V
	squirrel-cage motor	350 W 250 V
Time base	quartz	
Accuracy of operation	1 s/24 h	
Operating temperature	-10°C to +50°C	
Storage temperature	-20°C to +60°C	
Insulation class (flush fitting)	II	
Protection index (flush fitting)	IP 20	
Conformity to standard EN 60.730	yes	

## Different versions

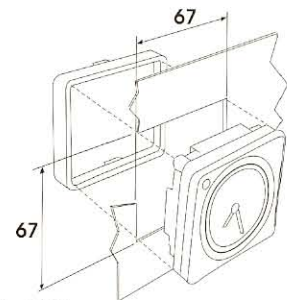
Reference	Type of fixation	Cycle	Power reserve	Contact
16001	BR6 - BR7	24 h	200 h	16 (3) A
16009	BR6 - BR7	24 h	—	16 (3) A
16701	BR6 - BR7	7 d	200 h	16 (3) A
16710	BR6 - BR7	7 d	—	16 (3) A
16061	BR7	24 h	200 h	16 (3) A
16062	BR7	24 h	—	16 (3) A
16761	BR7	7 d	200 h	16 (3) A
16762	BR7	7 d	—	16 (3) A

Also available in the following versions:  
 - 100 to 250 V AC and 45V DC (cycle 24 h or 7 d with or without running reserve)  
 - 6 to 24V AC/DC (cycle 24 h or 7 d with or without running reserve)

Performances indicated for an ambient temperature of 20°C

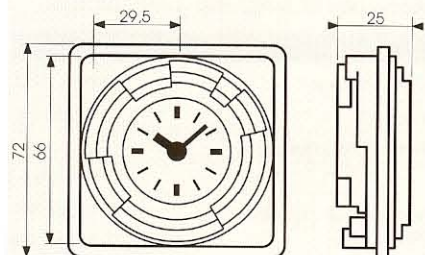


Fixation bracket BR 6  
ref. 95583

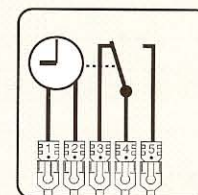


Fixation bracket BR 7  
ref. 95588

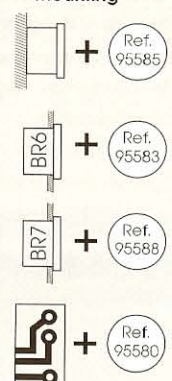
## Dimensions



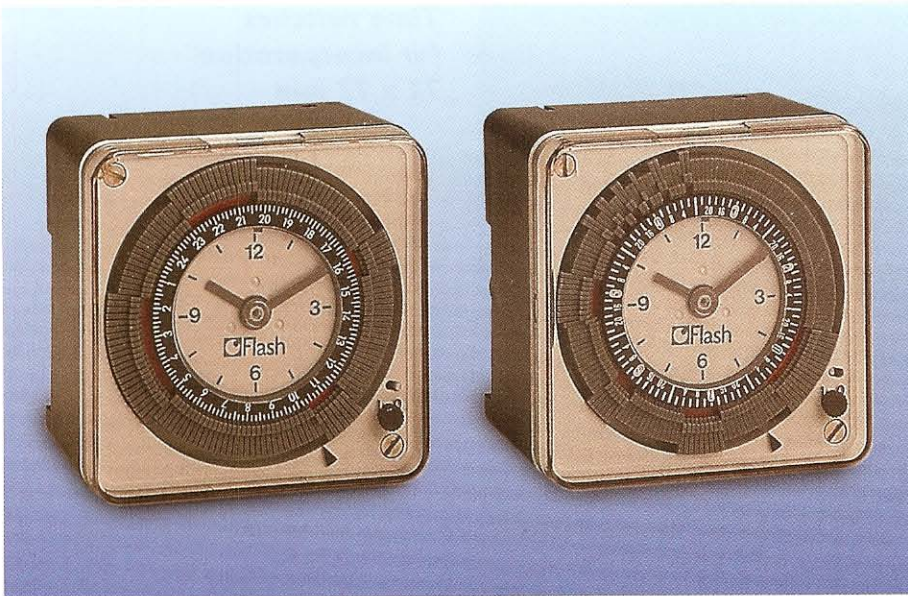
## Electrical connections



## Mounting



Time switches in surface mount case 72 x 72 mm installation version



Timing programming

## Features

- Programming by unlosable segments. A red zone is unmasked by the segment when put into the ON state; in the OFF state this red zone is masked.
- Indication of time by clock hands allowing time setting in both directions by simple rotation. Summer/winter time corrections are easily carried out.
- Manual override control with automatic return to normal sequence of program.
- Display of condition of contact
- Plug-in time switch with stirrup terminals incorporated in the case
- Fixation without accessories
  - surface mounted
  - on symmetrical rail
  - flush mounted
- 16 A changeover contact without potential

## Functional characteristics

### Daily version:

- Programming in steps of 10 min
- Minimum interval between 2 switchings: 20 minutes
- 72 switchings per day
- Accuracy of switching: 1 min. 30 sec.

### Weekly version:

- Programming in steps of 1 hour
- Minimum interval between 2 switchings: 2 hours
- 84 switchings per week
- Accuracy of switching: 10 min.

## Technical characteristics

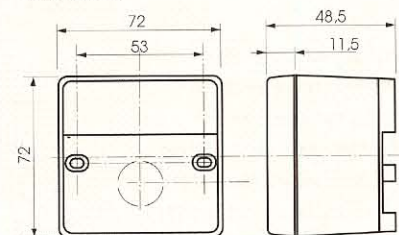
Supply voltage	6 to 24 V AC/DC or 100 - 250 V AC or 230 V +10% -15%	
Frequency	50/60 Hz or DC      50/60 Hz      50/60 Hz	
Power consumption	approx. 0,5 VA	
Changeover contact voltage free	Resistive load	16 A 250 V
	inductive load (cos φ = 0,6)	3 A 250 V
	incandescent lamps	1000 W 250 V
	squirrel-cage motor	350 W 250 V
Time base	quartz	
Accuracy of operation	1 s/24 h	
Operating temperature	-10°C to +50°C	
Storage temperature	-20°C to +60°C	
Connection by cage terminals, section of conductors	1 to 6 mm <sup>2</sup>	
Insulation class	II	
Protection index	IP 20	
Conformity to standard EN 60.730	yes	

## Different versions

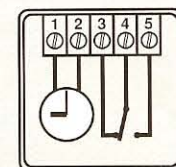
230 V	Reference 6 to 24 V AC/DC	100-250 V AC & 48 V DC	Cycle	Power reserve	Contact
16021	16027	16302	24 h	200 h	16 (3) A
16022	16017	16301	24 h	—	16 (3) A
16721	16720	16602	7 d	200 h	16 (3) A
16722	16715	16601	7 d	—	16 (3) A

Performances indicated for an ambient temperature of 20°C

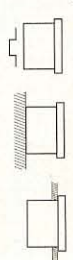
### Dimensions



### Electrical connections



### Mounting



See technical guide page 58